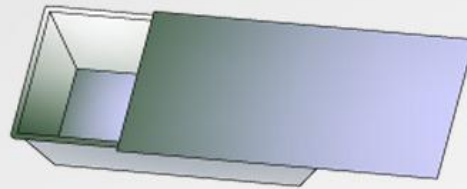


# Pullman Pans & Cover

Aluminized steel 1 m.m. th.

5 m.m. dia. Wire in Rim and Sliding Cover



Code	Top In m.m.	Bottom Out m.m.	Depth m.m.	Loaf Capacity
Large Toast with cover	120x380	120	120	5000 m.l.
Regular Toast with cover	100x300	100	100	2500 m.l.